

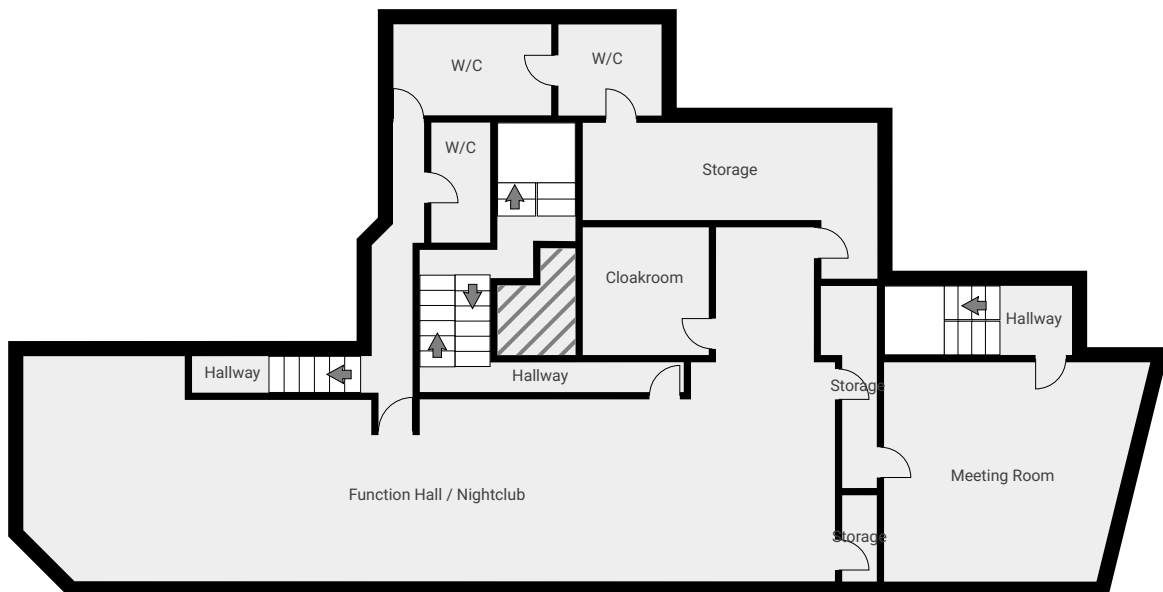
▼ Ground Floor

TOTAL AREA: 116.07 m² • LIVING AREA: 116.07 m² • ROOMS: 20



▼ 1st Floor

TOTAL AREA: 100.83 m² • LIVING AREA: 100.83 m² • ROOMS: 12



The floor plan is for guidance only, the layout may not be accurate and measurements are not to scale.

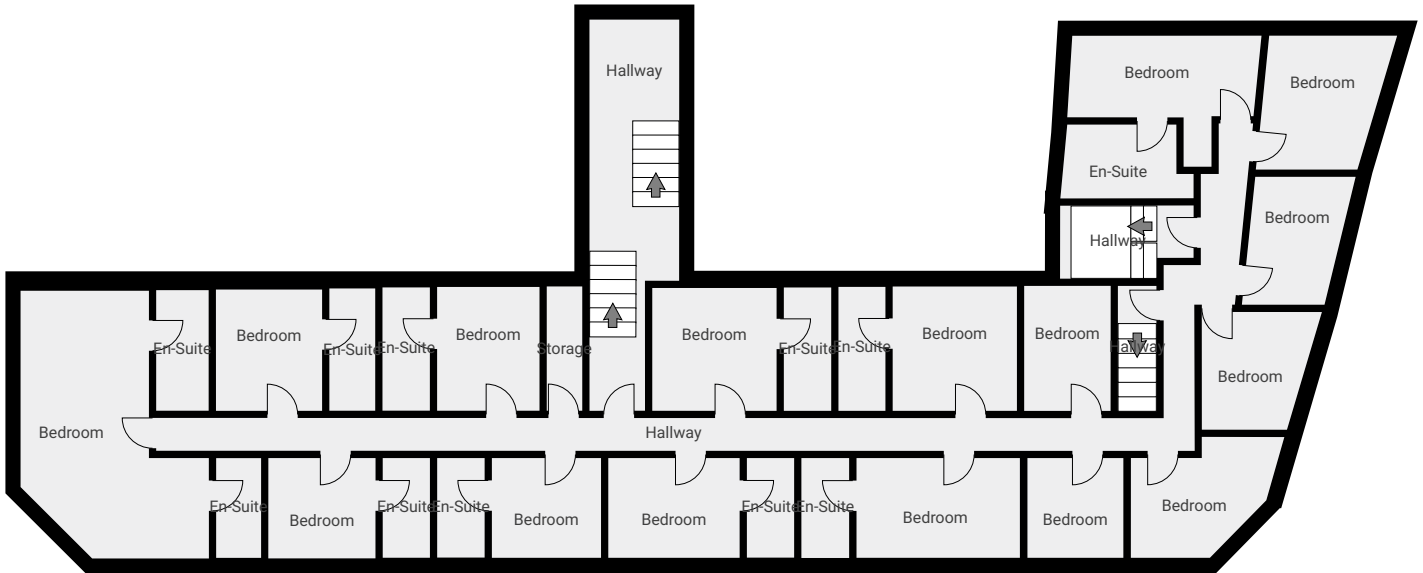
0 2 4 6m

1:125

Page 1/2

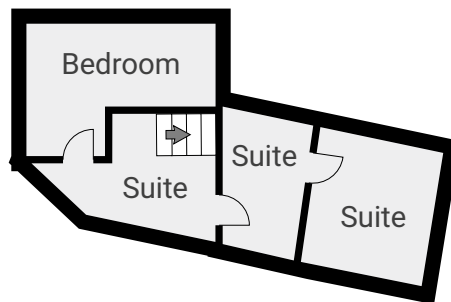
▼ 2nd Floor

TOTAL AREA: 106.52 m² • LIVING AREA: 106.52 m² • ROOMS: 32

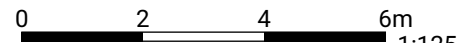


▼ 3rd Floor

TOTAL AREA: 17.01 m² • LIVING AREA: 17.01 m² • ROOMS: 4



The floor plan is for guidance only, the layout may not be accurate and measurements are not to scale.



1:125
Page 2/2